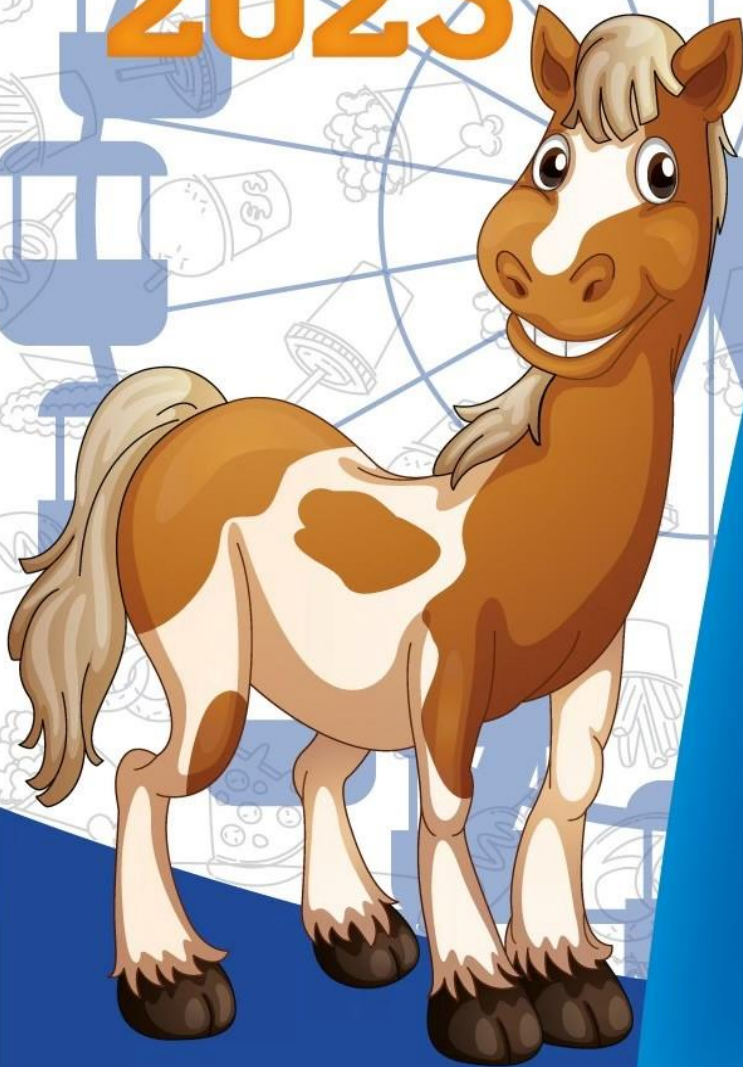


**WE ARE BACK:  
FAIR STRONG,  
COUNTY WIDE**

**THE  
FAIR**  
SANTA CLARA COUNTY FAIRGROUNDS  
MANAGEMENT CORPORATION

**2023**



**JUNIOR AND ADULT  
COMPETITIVE  
EXHIBITS**

**INCLUDES:**

**Gardening  
Baking  
Preserved Foods  
Arts & Crafts  
Visual Arts  
Technology**

# The 2023 Santa Clara County Fair

## Presented By:

### Santa Clara County Board of Supervisors

District 1: Sylvia Arenas  
District 2: Cindy Chavez  
District 3: Otto Lee  
District 4: Susan Ellenberg  
District 5: Joe Simitian

### Santa Clara County Fairgrounds Management Corporation Board of Directors

District 1: Vicky Bosworth  
District 2: OPEN  
District 3: David Bini  
District 4: Martin Ucovich  
District 5: Orrin Mahoney

### Santa Clara County Fair Staff

Abe Andrade, Executive Director  
Sandy Shayesteh, Director of Finance, HR & IT  
Salene Duarte, Fair Manager  
Maddie Beckwith, Livestock Assistant  
Shea De'Arman, Exhibits Assistant  
Anna LaBarbera, Agriculture Education Assistant

A special thank you to our team leaders who dedicate time to the Fair year-round.

Bob Towle, Large Animals  
Nadine and James Duarte, Beef Committee Chair  
Cheryl Beckwith and Kyle Jordan, Swine Committee Chair and Teen Lead  
Anna LaBarbera and Rhedyn Arnett Sheep Committee Chair and Teen Lead  
Kurt Stutzman, Market Goat Committee Chair  
Rob Causey, Dairy Goat Committee Chair  
Megan Baird, Dairy Cattle Committee Chair  
Regina Matthews, Horse Committee Chair  
  
Linda Teagle and Aaron Teagle, Small Animals  
Jason Bombardier, Rabbit Committee Chair  
Teri Sheaffer and Malia Sheaffer, Cavy Committee Chair and Teen Lead  
Ashley Fiore and Lauren Fiore, Poultry Committee Chair and Teen Lead  
OPEN Dog Committee Chair and Teen Lead  
Karen Clayton and Anna Clayton, Pygmy Goats Committee Chair and Teen Lead

Colleen Haggerty, Competitive Exhibits  
Salene Duarte, Awards and Appreciation  
Shelia Vass, Auction  
And many other Volunteers!!

# Table of Contents

Rules and Guidelines	5-8
Entry due dates and Receiving	9
Agriculture-Horticulture	10-11
Arts & Crafts	12-13
Baked Goods and Confections	14-15
Business – Youth Only	16
Collections	17-18
Decorated Foods	19-20
Educational Display	21
Feature Booth – Youth Only	22
Floriculture	23-24
Graphic & Two-Dimensional Art	25
Honey	26-27
Legos – Youth Only	28
Menu Planning – Youth Only	29
Needle & Fiber Arts	30-31
Photography	32 -33
Preserved Foods	34-35
Recycle! Repurpose!	36
Record and Project Books – Youth Only	37
Sewing & Quilting	38-39
Table Setting	40-41
Technology & Computer Science	42-43
Veggie-Art	44
Organization / Group Exhibits	45

# Junior & Adult Competitive Exhibits Rules And Guidelines

# Rules and Guidelines

**The Santa Clara County Fair Management reserves the final and absolute right to interpret all rules and regulations and arbitrarily settle all matters, questions, and differences regarding and reserves the right to amend and add to these rules.**

## General Guidelines

1. The Competitive Exhibits department and fair staff reserve the right to decline and or accept any entry found to violate these listed rules and regulations or found unsuitable for the family audience that the Fair supports.
2. All work must have been made, collected, grown, or prepared by the exhibitors between August 2022 and July 2023 to be exhibited at the Santa Clara County Fair. Exception for collections that must be changed by 10% from the previous year.
3. All work must be original. No copies, prints, or giclee.
4. Entries are limited to age divisions noted for each Section.
5. Only the Competitive Exhibits committee members and fair staff will be permitted to handle entries while on display.
6. It is the responsibility of the exhibitor that fresh arrangements be maintained throughout the showing. Materials may be replaced as necessary and watered daily as needed.
7. The greatest care will be exercised in handling exhibits at all times, but the Santa Clara County Fair, its staff, and volunteers will not be held liable for loss, theft, or damage of any kind from any cause. Submission of any work constitutes an agreement to this effect.
8. All entries will be \$2 per entry for all exhibitors. This is to help cover the costs of judges and awards.
9. Entries entered in the **wrong section and/or class** are at risk of being marked down. If you have any questions about your entry, contact the Fair Office at 408-477-7125 or [SDuarte@thefair.org](mailto:SDuarte@thefair.org), or [SDearman@thefair.org](mailto:SDearman@thefair.org).
10. Some entries require photos and for computer science, they are links or the programs, slide shows, etc.
11. **Entries must stay through the end of the Santa Clara County Fair or their release time.** Competitive Exhibit entries will not be released until Monday, August 7th, 2023, from 10 am to 3 pm. Items and/or awards left after the official release date are not the responsibility of the Santa Clara County Fair. If no contact is made to pick up items, they become the property of the Fair after 30 days.
12. Purchased baked, canned, or otherwise prepared foods are not acceptable as a Competitive Exhibit entry. Attempting to submit such an entry will result in the disqualification of both the entry and the exhibitor. Further actions may be taken against the exhibitor.
13. If any businesses would like to enter and or have their products on display, please contact the fair office to see what accommodation can be made. We will ask for sponsorship of the category which your business represents.
14. It is the responsibility of the exhibitor to maintain planter beds and wheelbarrow gardens throughout the duration of the fair. Watering must be complete by 12 pm daily, there will be a watering hose for exhibitor use, which must be coiled up after use, and watering should not happen during the hours the fair is open to the public.
15. All junior small and large animal exhibitors **MUST** also submit a Competitive Exhibit entry. Failure to enter a Junior Competitive Exhibit will result in ineligibility to show animal(s) and receive any premium monies. Competitive Exhibits MAY NOT be purchased – they must follow Competitive Exhibits guidelines.

## Age Divisions

16. Note all Sections may not have all age divisions available. Check each Section to see which divisions are available.



# Rules and Guidelines

## Age Divisions

17. Note all Sections may not have all age divisions available. Check each Section to see which age divisions are available.
- a. **Youth Primary** - 4-H youth ages 5 to 8 years old as of January 1<sup>st</sup> of the current year.
  - b. **Youth Junior** – 4-H youth ages 9 to 11 years old as of January 1<sup>st</sup> of the current year.
  - c. **Youth Intermediate** – 4-H youth ages 12 to 14 years old as of January 1<sup>st</sup> of the current year.
  - d. **Youth Senior** – 4-H and FFA youth ages 15 to 19 years old as of January 1<sup>st</sup> of the current year. All FFA members should enter into the youth senior age division.
  - e. **Adult Amateur** – Anyone 20 years or older as of January 1<sup>st</sup> of the current year who engages in an art or craft as a hobby or for the love of the work and whose income from sales or teaching does not exceed \$10,000 per year.
  - f. **Adult Professional** – Anyone 20 years or older as of January 1<sup>st</sup> of the current year who earns income exceeding \$10,000 from teaching or selling items crafted within a specific department.
18. Entries are judged by the American or Danish systems as defined below.
- a. **American System:** Entries are compared against a standard of perfection and against the other entries. Only one 1<sup>st</sup>, 2<sup>nd</sup>, and 3<sup>rd</sup> place ribbon will be awarded for each class.
    - o All adult classes will be judged by the American system.
  - b. **Danish System:** Entries are judged according to a standard judging criteria; they are not in competition with or compared to each other. Multiple Star Blue, Blue, Red, and White ribbons can be given in each class, based on points received while judging.
    - o ALL youth entries are judged by the Danish system; however, the American system will be used to determine Best of Division, Best of Section, Best of Show, Youth High Point, and Outstanding Exhibit.
19. **Youth rules:**
- a. All youth residing in Santa Clara County and surrounding counties age 5-19 years' old, as of January 1st, of current year and members of 4-H or FFA can enter competitive exhibits in the Fair. Youth must be in good standing with the Fair and their affiliated organization, if applicable, in order to be eligible to enter.
  - b. Youth who are not members of 4-H or FFA should mark Independent on their entry form.
  - c. It shall be the responsibility of the exhibitor to correct all discrepancies in connection with the entries or exhibits which are required of them by the rules printed in this book. Awards may not be awarded for exhibits in which discrepancies have not been corrected before judging of the class has started.
20. Judging comments will be made and provided to exhibitors along with any awards earned with release of entries after the Santa Clara County Fair.
21. **Fair Award Information** – The type of Award (buckle, rosette, other) is based on sponsorship, but will be given to the winners of each Section based on their age Division.
- a. All **Youth Primary** participants will receive comment cards and Participation Ribbons only.
  - b. All other **Youth Age Divisions** (Junior, Intermediate and Senior) will receive ribbons and other awards and/or buckles, if sponsored, and are evaluated using the Danish System. Except for Best of Youth Division, Youth High Point and Outstanding Exhibit, and Best of Section. Which will be awarded as described below.
  - c. **Best of Youth Division** winners are selected in each Section (business, honey, etc.) based on entries earning a Star Blue ribbon. From these Star Blue entries, one entry will be chosen as best entry for each age Division for both 4H and FFA exhibitors.
    - i. If no Star Blues are awarded to the Division, no **Best of Division** award will be given.

# Rules and Guidelines

- d. **Best of Youth Section** based on the winning entries of each of the 4-H youth age Division (Junior, Intermediate and Senior) in one section (business, honey, etc.), one 4-H items will be chosen for Best of Youth Section for 4-H. There is only one age Division in FFA, so the Best Youth Division winner will also be Best of Youth Section winner.
  - e. **Outstanding Youth Exhibit** – one for 4-H and one for FFA.
    - i. Decided by three alumni. Based on Best of Section winners for 4-H or FFA.
  - f. Youth **High Point** award in each of the three 4-H Divisions (Junior, Intermediate & Senior) and one FFA Division (Senior) are determined by the following:
    - i. Exhibitors receive points for every **Section** they enter.
    - ii. Points are only given for the highest placing item within each Section.
    - iii. If multiple items are entered in one Section exhibitors will only receive points for the highest placing item per Section.
    - iv. Exhibitors must enter at least 2 Sections to be eligible for Youth High Point
    - v. Exhibitors can only win high point in their age division one time.
    - vi. Point schedule: Star blue= 6 points, blue=3 points, red=2 points, and white=1point.
    - vii. In case of a tie, the following will be used as tiebreakers:
      1. Number of Division Winner Awards
      2. Exhibitor with most Star Blues
      3. Exhibitor with most Blues
      4. Number of Sections entered.
22. **Adult rules:**
- a. All adults residing in Santa Clara County and surrounding counties 20 years old, as of January 1st, of the current year can enter competitive exhibits in the Fair.
  - b. **Adult Amateur** and **Professional** Divisions will receive ribbons only and are judged using the American System.
    - i. Best of Section Adult winners for Amateurs only. The first-place items of each Division will compete for Best of Section.
    - ii. Best of Show Adult winner for Amateurs only. The Best of Section winner will compete for Best of Show.
23. **Silent Auction Rules:**
- a. Junior, Intermediate, and Senior youth exhibitors who enter competitive exhibits will be allowed to sell exhibited items by a silent auction. No adult entries allowed.
  - b. The **ONLY** Sections eligible for the silent auction are:
    - i. Arts & Crafts
    - ii. Recycle! Repurpose!
    - iii. Graphic & Two-Dimensional Art
    - iv. Needle & Fiber Arts
    - v. Photography
    - vi. Sewing & Quilting
    - vii. Technology & Computer Science (Wood Working, Metal shop, and 3D Printing classes only.)
  - c. Junior, Intermediate, and Senior youth exhibitors may sell **NO** more than three (3) items total per exhibitor.
  - d. On the online entry exhibitors must note the following items:
    - i. Specific Sale Price/Starting bid – **NO RANGES**. Sale price to include frames, item displayed in, or other mounting items. i.e. Intent is items will be sold as received on the fairgrounds.
    - ii. Explain how the price of item was determined, including a list of materials used, time spent on making the item, etc.
    - iii. If the entry is to be sold by silent auction.

## Rules and Guidelines

- e. 10% commission of the sale will be collected by SCCFMC.
- f. Items will be picked up by the buyer from the Fair on, **Monday, August 7<sup>th</sup>**.
- g. All payments will be made to SCCFMC (Santa Clara County Fair Management Corporation) a 501c3, prior to items being picked up.
- h. The Fair is not responsible for items that receive no bids.
- i. Only items awarded Star Blue or Blue will be deemed eligible to be sold in the silent auction, items that receive Red or Whites will not be eligible for the silent auction.
- j. Items receiving no bids or deemed ineligible, i.e. items earning Red or White ribbons must be picked up by the exhibitor or their designee during the exhibit release time noted above.



# Entry Due Dates and Receiving

**ENTRIES DUE: June 28<sup>th</sup>, 2023 LATE ENTRIES DUE: July 5<sup>th</sup>, 2023**

The location for receiving is the backside of Fiesta Hall. Enter Gate C Off Old Tully Road. Hours to drop off are noted below. MOST COMPETITIVE EXHIBITS WILL BE RECEIVED ON **July 14<sup>th</sup>** and **July 15<sup>th</sup>**!! Please see below for receiving dates and times.

**NEW!** All items released along with ribbon and award pickup on Monday August 7<sup>th</sup> from 10-3PM

Agriculture-Horticulture	<b>July 26<sup>th</sup> 9AM to 12PM</b>
Arts & Crafts	July 14 <sup>th</sup> 9AM to 4PM or July 15 <sup>th</sup> 9AM to 2PM
Baked Goods and Confections	<b>July 26<sup>th</sup> 9AM to 12PM</b>
Business – Youth Only	July 14 <sup>th</sup> 9AM to 4PM or July 15 <sup>th</sup> 9AM to 2PM
Clothing and Textiles	July 14 <sup>th</sup> 9AM to 4PM or July 15 <sup>th</sup> 9AM to 2PM
Collections	July 14 <sup>th</sup> 9AM to 4PM or July 15 <sup>th</sup> 9AM to 2PM
Decorated Foods	July 14 <sup>th</sup> 9AM to 4PM or July 15 <sup>th</sup> 9AM to 2PM
Educational Display – Youth Only	July 14 <sup>th</sup> 9AM to 4PM or July 15 <sup>th</sup> 9AM to 2PM
Feature Booth – Youth Only	July 14 <sup>th</sup> 9AM to 4PM or July 15 <sup>th</sup> 9AM to 2PM
Floriculture ***** <b>Planter Bed ONLY RECEIVING</b> *****	<b>July 26<sup>th</sup> 9 AM to 12 PM</b> <b>July 22<sup>nd</sup> – 25<sup>th</sup> 9 AM to 2 PM</b>
Graphic & Two-Dimensional Art – Youth Only	July 14 <sup>th</sup> 9AM to 4PM or July 15 <sup>th</sup> 9AM to 2PM
Honey	July 14 <sup>th</sup> 9AM to 4PM or July 15 <sup>th</sup> 9AM to 2PM
Legos – Youth Only	July 14 <sup>th</sup> 9AM to 4PM or July 15 <sup>th</sup> 9AM to 2PM
Menu Planning – Youth Only	July 14 <sup>th</sup> 9AM to 4PM or July 15 <sup>th</sup> 9AM to 2PM
Needle & Fiber Arts	July 14 <sup>th</sup> 9AM to 4PM or July 15 <sup>th</sup> 9AM to 2PM
Photography	July 14 <sup>th</sup> 9AM to 4PM or July 15 <sup>th</sup> 9AM to 2PM
Preserved Foods	July 14 <sup>th</sup> 9AM to 4PM or July 15 <sup>th</sup> 9AM to 2PM
Recycle! Repurpose!	July 14 <sup>th</sup> 9AM to 4PM or July 15 <sup>th</sup> 9AM to 2PM
Record and Project Books – Youth Only	July 14 <sup>th</sup> 9AM to 4PM or July 15 <sup>th</sup> 9AM to 2PM
Sewing & Quilting	July 14 <sup>th</sup> 9AM to 4PM or July 15 <sup>th</sup> 9AM to 2PM
Table Setting	July 14 <sup>th</sup> 9AM to 4PM or July 15 <sup>th</sup> 9AM to 2PM
Technology & Computer Science – Youth Only	July 14 <sup>th</sup> 9AM to 4PM or July 15 <sup>th</sup> 9AM to 2PM
Veggie-Art	<b>July 26<sup>th</sup> 9AM to 12PM</b>

# Agriculture-Horticulture

<b>Entry Due Date:</b>	June 28 <sup>th</sup> , 2023
<b>Late Entry Due Date:</b>	July 5 <sup>th</sup> , 2023 (\$10 late fee per entry)
<b>Entry Fee:</b>	\$2 per entry
<b>Receiving Day and Time:</b>	July 26 <sup>th</sup> 9AM to 12PM

## RULES

1. Please read the rules and guidelines at the beginning of the book. You may also see examples below.
2. Agriculture-Horticulture is a branch of agriculture that deals with the art, science, technology, and business of plant cultivation. Example: **Fruits, Nuts, Herbs, and Gourds.**
3. Agriculture and Horticulture product exhibits will be judged on the quality that brings the best financial return in the commercial market. Judging criteria includes produce quality; uniformity in ripeness, size and color; scent, and cleanliness. Features that detract from the commercial value or are undesirable should be avoided, including insects and foreign material/debris.
4. Exhibits must be at least equal in maturity, and uniform in the stage of ripeness as required by the California Agriculture Code.
5. Each exhibit must be labeled separately on entry by species and type.
6. Entries are open to AMATEURS and PROFESSIONALS. An AMATEUR is defined as an exhibitor who engages in an art or craft as a hobby or for the love of the work, and whose income from sales or teaching does not exceed \$10,000 per year. PROFESSIONAL is defined as an exhibitor one who earns income exceeding \$10,000 from teaching or selling items crafted within a specific department.
7. Entries, except small fruits and berries, must be entered on a paper plate for display (plates will not be returned).
8. Berries should be in a 4"x4" berry basket.
9. Small fruits other than berries, should be entered in a standard commercial basket for small fruits.
10. **Examples:**
  - a. **Fruits and Nuts:** Apple, Grapes, Cashews, Almonds, Etc.
  - b. **Tomatoes:** Roma, Heirloom, Cherry, Etc.
  - c. **Peppers:** Bell, Jalapeno, Serrano, Etc.
  - d. **Herbs:** Basil, Oregano, Bay Leaves, Etc.
  - e. **Roots Crops:** Carrots, Potatoes, Radishes, Etc.
  - f. **Vine Crop:** Cucumbers, Gourds, Pumpkin, Etc.
  - g. **Corn:** Dent, Flint, Sweet, Pod Corn, Etc.
  - h. **Sunflowers:** American Giant, Chianti, Italian, Helianthus, Etc.
11. Quantities for entries will be as follows:
  - a. **Bunches and/or Heads:** 2 specimens
  - b. **Pumpkins, Gourds, and Winter Squash:** 1 specimen
  - c. **Berries:** ½ basket
  - d. **Cherry Tomatoes, Chile Peppers, Nuts, String, and Pole Beans:** 5 specimens
  - e. **Corn:** 3 ears without husks
  - f. **Herbs:** 6" – 8" long, at least 3 stems in small containers
  - g. **Sunflowers:** 1 head
  - h. **All other entries:** 3 specimens

# Agriculture-Horticulture

**1002 DIVISIONS: Youth Primary Ag-Hort**

**1003 DIVISIONS: Youth Junior Ag-Hort**

**1004 DIVISIONS: Youth Intermediate Ag-Hort**

**1005 DIVISIONS: Youth Senior Ag-Hort**

**1006 DIVISIONS: Adult Amateur Ag-Hort**

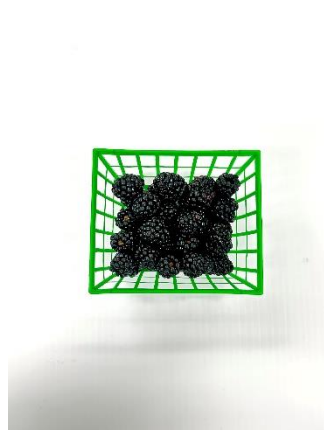
**1007 DIVISIONS: Professional Adult Ag-Hort**

**CLASSES:**

1. Fruits and Nuts
2. Tomatoes
3. Peppers
4. Herbs
5. Root Crop

6. Vine Crops
7. Corn
8. Sunflowers
9. Any Other - please specify

**Examples of entries.**



# Art & Crafts

<b>Entry Due Date:</b>	June 28 <sup>th</sup> ,2023
<b>Late Entry Due Date:</b>	July 5 <sup>th</sup> ,2023 (\$10 late fee per entry)
<b>Entry Fee:</b>	\$2 per entry
<b>Receiving Day and Time:</b>	July 14 <sup>th</sup> 9AM to 4PM or July 15 <sup>th</sup> 9AM to 2PM

## RULES

1. Please read the rules and guidelines at the beginning of the book. You may also see examples below.
2. Entries in the "Any Other" classes may only be entered if there is no class listed for that entry.
3. Items which have been shown at any previous Santa Clara County Fair are not eligible.
4. All entries must have been completed since the receiving date of the 2022 Santa Clara County Fair.
5. Entries in this section to be judged primarily on artistic merit, creativity, and craftsmanship. For items that could be entered in multiple Sections, for example a sewn toy should be entered sewing, etc. If exhibitor wants entries to be judged on technical merit it should be entered other Sections, i.e. **Sewing & Quilting, Graphic & Two - Dimensional Art, Technology & Computer Science.**
6. Entries are limited to AMATEURS. An AMATEUR is defined as an exhibitor who engages in an art or craft as a hobby or for the love of the work, and whose income from sales or teaching does not exceed \$10,000 per year.
7. **Decorative painting** is a diverse art form. A variety of techniques may be used to decorate both functional and decorative surfaces including wood, tin, fabric, ceramic, and canvas. The use of patterns and freehand designs are allowed.
8. **Papercraft** entries must contain primarily paper.
9. Entries in this section are judged on artistic merit creativity and craftsmanship.
10. Entries may include a 3" x 5" card describing the entry and the various techniques used in creating the entry, particularly for the "any other class" or if multiple techniques were used.
11. **Examples:**
  - a. **Ceramics & Pottery (Hand-built or made on a pottery wheel):** Clay Pots, Cups, Vases, Etc.
  - b. **Toys:** Sock Animals, Clothes Pin Doll, Puzzles, Etc.
  - c. **Jewelry:** Earrings, Necklaces, Rings, Etc.
  - d. **Decorative Painting:** China Painting, Tole Painting, Stenciling, Etc.
  - e. **Paper Crafts:** Origami, Greeting Cards, Quilling, Etc.
  - f. **Leather:** Wallets, Belts, Jackets, Etc.
  - g. **Duct Tape:** Wallets, Flowers, Decorative Pens, Dresses, Etc.
  - h. **Holiday Decorations:** Wreaths, Seasonal Holiday Tree, Etc.
  - i. **Stained Glass & Mosaics:** Sun Catchers, Windows, Etc.
  - j. **Soap Bar:** Decorative Soap, Etc. (No Liquid Soap)

## DIVISIONS

**1012 DIVISIONS: Youth Primary Arts & Crafts**

**1013 DIVISIONS: Youth Junior Arts & Crafts**

**1014 DIVISIONS: Youth Intermediate Arts & Crafts**

**1015 DIVISIONS: Youth Senior Arts & Crafts**

**1016 DIVISIONS: Adult Amateur Arts & Crafts**

# Art & Crafts

**CLASSES:**

- 1. Ceramics/Pottery
- 2. Toys/Dolls/Animals
- 3. Jewelry
- 4. Decorative painting
- 5. Papercrafts
- 6. Leather
- 7. Duct Tape
- 8. Holiday Decorations
- 9. Stained glass & mosaics
- 10. Soap
- 11. Any Other – please specify

Examples of entries.





# Baked Goods and Confections

<b>Entry Due Date:</b>	June 28 <sup>th</sup> ,2023
<b>Late Entry Due Date:</b>	July 5 <sup>th</sup> ,2023 (\$10 late fee per entry)
<b>Entry Fee:</b>	\$2 per entry
<b>Receiving Day and Time:</b>	July 26 <sup>th</sup> - 9AM to 12PM

## RULES

1. Please read the rules and guidelines at the beginning of the book. You may also see examples below.
2. Adult entries – NO box mixes.
3. Youth entries – Prepared mixes may be used only as a base; at least five other ingredients must be added to the mix, not including the embellishments.
4. Bring all entries on a heavy, disposable white paper plate, wrapped in clear plastic. **Pies must be in a disposable pie tin.**
5. Entries are to be prepared at home, without the use of commercial equipment or commercial kitchen facilities.
6. Entries are limited to AMATEURS. An AMATEUR is defined as an exhibitor who engages in an art or craft as a hobby or for the love of the work, and whose income from sales or teaching does not exceed \$10,000 per year.
7. Entries MUST include a minimum 3"x5" recipe card including ingredients (with measurements), preparation steps, baking time, and temperature.
8. Entries received hot, frozen or with any ingredient that hasn't been cooked/baked will not be accepted. The exceptions are frosting, fillings and decorations that are safe to be stored at room temperature.
9. No whipped cream or any frosting/filling that requires refrigeration are allowed.
10. **Examples:**
  - a. **Cakes:** Birthday, Angels Food, Pound, Etc.
  - b. **Cupcakes/Cake Pops:** Chocolate, Vanilla, Etc.
  - c. **Cookies:** Chocolate Chip, Sugar, Etc.
  - d. **Pie:** Pumpkin, Cherry, Etc.
  - e. **Confections** Fudge, Truffles, Carmel, Etc.
  - f. **Non-Yeast Loaf:** : Banana Bread, Zucchini Bread, Irish Soda Bread, Australian Damper Bread, Etc.
  - g. **Non- Yeast Non-Loaf:** Scones, Muffins, Corn Bread, Etc.
  - h. **Yeast Loaf:** Naan, Whole Wheat, Etc.
  - i. **Yeast non-Loaf:** Soft Pretzels, Etc.
11. Quantities for entries to be as follows:
  - a. **Cake:** ¼ uncut plus one slice
  - b. **Pies:** whole pie, the minimum size is 5"
  - c. **Bread:** Whole Loaf
  - d. Small Items (**cookies, cupcakes, rolls**, etc.): ½ dozen
  - e. **Confections:** 6 pieces

**1182 DIVISIONS: Youth Primary Baked Goods and Confections**  
**1183 DIVISIONS: Youth Junior Baked Goods and Confections**  
**1184 DIVISIONS: Youth Intermediate Baked Goods and Confections**  
**1185 DIVISIONS: Youth Senior Baked Goods and Confections**  
**1186 DIVISIONS: Adult Amateur Baked Goods and Confections**

# Baked Goods and Confections

## CLASSES:

1. Cakes
2. Cupcakes/Cake Pops
3. Cookies
4. Pies
5. Confections
6. Non-Yeast loaf
7. Non-Yeast non-loaf
8. Yeast Loaf
9. Yeast non-loaf
10. Bread Machine.

## Examples of entries.



## Business – Youth Only

<b>Entry Due Date:</b>	June 28 <sup>th</sup> ,2023
<b>Late Entry Due Date:</b>	July 5 <sup>th</sup> ,2023 (\$10 late fee per entry)
<b>Entry Fee:</b>	\$2 per entry
<b>Receiving Day and Time:</b>	July 14 <sup>th</sup> 9AM to 4PM or July 15 <sup>th</sup> 9AM to 2PM

### RULES

1. Please read the rules and guidelines at the beginning of the book. You may also see examples below.
2. All work must be mounted on cardstock or poster board stock by the exhibitor for ease of presentation.
3. Do not use real names, phone numbers, or home or email addresses that will be visual to the public.
4. Work that is longer than one page should be displayed in a format such that it can be seen without turning pages.
5. Work should be true to life and appropriate for a business situation.
6. Work or slogans that are used and not created by the exhibitor must be noted by typing the information on a 3"x5" card; include a place where the material originated and attach the card for entry.
7. **Resume** entries will be about the exhibitor and appropriate for use as a job application. No more than 2 8"x 11" pages.
8. **Letterhead** entries will include stationery and envelope designs that best represent the exhibitor, their interests, or their business interest.
  - a. Present both items on the same card for display.
  - b. Designs should be original to the exhibitor.
  - c. Photos, clip art, or designs used from other sources should be noted on the back of the card or poster.
9. **Newsletter** entries should be a complete newsletter that could be used to represent your business, chapter, or club.
10. **Promotional Brochure** entries should represent a product or company (real or imaginary). The brochure is to be a maximum of 4 pages.
11. **Project displays** are three-dimensional displays promoting a project.

**1022 DIVISIONS: Youth Primary Business**

**1023 DIVISIONS: Youth Junior Business**

**1024 DIVISIONS: Youth Intermediate Business**

**1025 DIVISIONS: Youth Senior Business**

#### CLASSES:

1. Resume
2. Letterhead
3. Newsletter

4. Promotional Brochure
5. Product Display
6. Any Other - please specify

# Collections

<b>Entry Due Date:</b>	June 28 <sup>th</sup> ,2023
<b>Late Entry Due Date:</b>	July 5 <sup>th</sup> ,2023 (\$10 late fee per entry)
<b>Entry Fee:</b>	\$2 per entry
<b>Receiving Day and Time:</b>	July 14 <sup>th</sup> 9AM to 4PM or July 15 <sup>th</sup> 9AM to 2PM

## RULES

1. Please read the rules and guidelines at the beginning of the book. You may also see examples below.
2. A Collection consists of items gathered/collected with a common theme. Examples include, but are not limited to ceramics, clocks, coins, spoons, miniatures, dolls, etc.
3. Each display must include an information card that explains the collection. Example information to include; why you collect the items, identify which were created by the exhibitor, a story about the items, when the collection began, etc.
4. Information card must be at least 5"x7" and cannot exceed 15"x15"; text should be readable from a distance of 3 feet.
5. Collection items may have been purchased, found, or created by the exhibitor.
6. Entry form must state the type of collection and contain a description of the exhibit and the number of items that will be displayed.
7. Collections that have been entered in a previous year must be changed by 10% or more to be entered in the current year. A written description of the changes **MUST** be included.
8. Entries are limited to AMATEURS. An AMATEUR is defined as an exhibitor who engages in an art or craft as a hobby or for the love of the work, and whose income from sales or teaching does not exceed \$10,000 per year.
9. Please contact the Fair Office if your collection requires special accommodations.
10. **Youth Exhibits and Adult Exhibits MUST be assembled and displayed by the exhibitor during the receiving hours listed above. Adult help is not allowed for youth exhibits.**
11. **The number of pieces and types of exhibits may be limited by the number and size of display cases available. Display cases will be assigned on a first-come, first-served basis on the receiving days.**

**1032 DIVISIONS: Youth Primary Collections**

**1033 DIVISIONS: Youth Junior Collections**

**1034 DIVISIONS: Youth Intermediate Collections**

**1035 DIVISIONS: Youth Senior Collections**

**1036 DIVISIONS: Adult Amateur Collections**

## CLASSES

1. All Entries

# Collections

Examples of entries.





# Decorated Foods

<b>Entry Due Date:</b>	June 28 <sup>th</sup> ,2023
<b>Late Entry Due Date:</b>	July 5 <sup>th</sup> ,2023 (\$10 late fee per entry)
<b>Entry Fee:</b>	\$2 per entry
<b>Receiving Day and Time:</b>	July 14 <sup>th</sup> 9AM to 4PM or July 15 <sup>th</sup> 9AM to 2PM

## RULES

1. Please read the rules and guidelines at the beginning of the book. You may also see examples below.
2. Entries will be judged on eye appeal, decorating technique, level of difficulty, creativity, practicality, presentation, and use of edible, rather than plastic, decoration. Items will be judged on decoration only, there will be no tasting.
3. Limit: one entry per exhibitor, per class.
4. Entries are open to AMATEURS and PROFESSIONALS. An AMATEUR is defined as an exhibitor who engages in an art or craft as a hobby or for the love of the work, and whose income from sales or teaching does not exceed \$10,000 per year. PROFESSIONAL is an exhibitor who earns income exceeding \$10,000 from teaching or selling items crafted within a specific department.
5. Dummy cakes **must** be used. Cardboard or Styrofoam is acceptable as the “cake” provided the shape is one which could reasonably be achieved through baking.
6. Cakes that are simply frosted should be entered in Baked Foods.
7. All decorations and icing must be stable at room temperature, *i.e.* Royal icing, fondant or similar is required. No frosting or decorations that require refrigeration are allowed.
8. **Marzipan** entries may be created with purchased marzipan. The items may be painted or colored with edible paint.
9. Maximum size including the base board, tray or plate should not exceed 22”x14”.
10. **Cookies** must be handmade.
11. Shaped or molded candies should be entered as confections in Baked Goods and Confections Section.
12. All decorations must be edible except candles, candle holders or figures.
13. Secure all decorations firmly.
14. **Examples:**
  - a. **Decorated Cakes:** Birthday Theme, Fair Theme, Plant Theme, Etc.
  - b. **Gingerbread House:** Christmas Theme, Vacation Theme, Farm Theme, Etc.
  - c. **Wedding Cake:** Traditional, Modern, Tiered, Etc.
  - d. **Decorated Cookies:** Glazed, Different Shaped, Etc.
  - e. **Marzipan:** Animals, Fruits, Flowers, Vegetables, Etc.
  - f. **Sugar Art:** Sugar Skulls, Pulled Sugar, Decorated Sugar Eggs, Etc.

**1042 DIVISIONS: Youth Primary Decorated Foods**

**1043 DIVISIONS: Youth Junior Decorated Foods**

**1044 DIVISIONS: Youth Intermediate Decorated Foods**

**1045 DIVISIONS: Youth Senior Decorated Foods**

**1046 DIVISIONS: Adult Amateur Decorated Foods**

**1047 DIVISIONS: Professional Decorated Foods**

# Decorated Foods

## CLASSES:

1. Decorated Cake
2. Gingerbread House
3. Wedding Cake
4. Decorated Cookies
5. Marzipan
6. Sugar Art
7. Any Other – Please Specify

## Examples of entries.



## Educational Display – Youth Only

<b>Entry Due Date:</b>	June 28 <sup>th</sup> ,2023
<b>Late Entry Due Date:</b>	July 5 <sup>th</sup> ,2023 (\$10 late fee per entry)
<b>Entry Fee:</b>	\$2 per entry
<b>Receiving Day and Time:</b>	July 14 <sup>th</sup> 9AM to 4PM or July 15 <sup>th</sup> 9AM to 2PM

### RULES

1. Please read the rules and guidelines at the beginning of the book. You may also see examples below.
2. An educational display is a teaching tool with a focused topic and purpose. Examples: Beekeeping/Honey, Kidding/Lambing, Leadership, Raising Livestock, Yarn Types, Etc.
3. Judging criteria will include a quality of content, organization, readability, neatness, and overall presentation of information.
4. All exhibits must have been studied and/or created between August 2022 and July 2023.
5. Exhibitors must have been the only contributor to the preparation and design of the project.
6. No perishable items, combustibles, or live animals.
7. Exhibits may be posters, panel displays, or livestock project displays.
8. **Panel entries:**
  - a. Panels must be able to stand on a table.
  - b. Must be no less than 22"x28."
  - c. Must be no more than 48"x48."
  - d. Information should be readable from a distance of 6 feet.
  - e. All parts must be attached to the panel, no free-standing props.
9. **Poster entries:**
  - a. This is a 2-dimensional category, no freestanding parts.
  - b. Must be on poster board or covered cardboard.
  - c. Must be no less than 11"x14."
  - d. Must be no more than 22"x28."
  - e. Information must be readable from a distance of 3 feet.
10. **Livestock project:**
  - a. Displays must fit into the perimeters of either a panel or poster display.

**1052 DIVISIONS: Youth Primary Educational Display**

**1053 DIVISIONS: Youth Junior Educational Display**

**1054 DIVISIONS: Youth Intermediate Educational Display**

**1055 DIVISIONS: Youth Senior Educational Display**

### CLASSES:

1. Panel Display
2. Poster

3. Livestock Project Display

## Feature Booths -Youth Only

<b>Entry Due Date:</b>	June 28 <sup>th</sup> ,2023
<b>Late Entry Due Date:</b>	July 5 <sup>th</sup> , (\$10 late fee per entry)
<b>Entry Fee:</b>	\$2 per entry
<b>Receiving Day and Time:</b>	July 14 <sup>th</sup> 9AM to 4PM or July 15 <sup>th</sup> 9AM to 2PM

### RULES

1. Please read the rules and guidelines at the beginning of the book. You may also see examples below.
2. This section is not eligible for high point.
3. Youth Organization only. No individual entries.
4. Entry limit 1 booth per organization.
5. Names of all exhibitors or organizations must be included with the entry.
6. The fairgrounds will provide a booth made of grid panels, to create a space 8ft wide by 6ft tall, connected in a "U" shape. The resulting booth will be 8ft by 8ft, enclosing a "U" shape space and standing 6ft tall. The floor space may be used as part of the exhibit or kept clean.
7. Exhibitor must provide all materials for decorating the booth and all tools with which to do it.
8. The booth must be decorated by the youth exhibitors, under the supervision of an adult, or a designated substitute, i.e., a junior leader, Eagle Scout, etc.
9. Electricity is not available.
10. Bring your own step ladder.
11. No live animals. Live plants may be submitted, but their care is the responsibility of the exhibitor.
12. Judges will consider a general appearance, quality of display materials, originality, and creativity, educational value, student's work (readable), impact on visitors, any special emphasis shown.

**0001 DIVISIONS: FFA Feature Booth**

**0002 DIVISIONS: 4-H Feature Booth**

**0003 DIVISIONS: Other Feature Booth**

### CLASSES:

1. California Agriculture
2. Fair Theme

3. Any Other- Please Specify

# Floriculture

<b>Entry Due Date:</b>	June 28 <sup>th</sup> ,2023
<b>Late Entry Due Date:</b>	July 5 <sup>th</sup> ,2023 (\$10 late fee per entry)
<b>Entry Fee:</b>	\$2 per entry
<b>Receiving Day and Time:</b>	July 26 <sup>th</sup> - 9AM to 12PM PLANTER BED ONLY - <b>July 22<sup>nd</sup> – 25<sup>th</sup> 9AM to 2PM</b>

## RULES

1. Please read the rules and guidelines at the beginning of the book. You may also see examples below.
2. Entries must be labeled, listing all materials used with both the common and botanical names, on a 3"x5" card.
3. The exhibitor will provide all exhibit containers – vases, cans, pots, dishes, etc.
4. Entries must be free from all injurious insects and diseases; Judge or Chairperson may disqualify infected entries.
5. All entries must be of market size and quality
6. **Everyday Floral Arrangements** must be finished on all sides and to consist of a minimum of three stems of material; no artificial flowers/greenery allowed.
7. **Special occasion** arrangements will be consistent with a holiday or celebration (such as a wedding or birthday). Please specify the occasion on the online entry form.
8. **Miniature arrangements** are to be no larger than 6" overall.
9. **Floral arrangements** to be no larger than 30" overall.
10. **Cut flowers** MUST have been grown by the exhibitor.
  - a. **Large varieties:** Rose, Lily, Gladiola, etc. must contain 1 stem per entry.
  - b. **Small varieties:** Button Mums, Babies Breath, Yarrow, etc. must contain 3 stems per entry:
  - c. Cut floral materials will be removed and disposed of when they no longer appear fresh.
11. **Potted plants** must be owned by the exhibitor for AT LEAST 45 days prior to the Fair. Plants MUST be established with growing roots in the same containers that will be exhibited at the Fair, or they will be disqualified.
12. **Potted self-propagated plants** entries must be owned by the exhibitor no less than 45 days and no longer than 2 years prior to the fair.
13. It is the responsibility of the exhibitor that fresh arrangements be maintained throughout the duration of the fair. Materials such as new flowers, new/adding water, trimming old leaves, etc. may be replaced as necessary.
14. **Dish gardens** to be no larger than 36" overall and may include artificial accessories such as figurines, buildings, paths, rocks, driftwood, etc. As well should be in scale with the container in plants. Example: (Fairy gardens, terrariums, etc.) No live animals are allowed.
15. **Planter beds** are provided by the Fair with soil. Size will be approximately 4 ft along the front of the bed by 9 ft to the back of the bed and 2ft deep. No decoration can disturb or permanently change the planter bed. i.e., No concrete, no permanent fencing, or permanent lighting.
16. **Wheelbarrow garden:** Exhibitors must provide their own wheelbarrows, which must be clear of any brand names, logos, or decorations. The wheelbarrow size must be no bigger than 6 cubic feet and no smaller than 3.25 cubic feet. Exhibitors are encouraged to paint or decorate the outside of the wheelbarrow. All exterior decorations must be at least 6 inches from the ground and may not exceed 4' from the tallest point of the wheelbarrow. Wheelbarrow gardens are to be planted so they can be mobile.
17. It is the responsibility of the exhibitor to maintain planter beds and wheelbarrow gardens throughout the duration of the fair. Watering must be complete by 12 pm daily, there will be a watering hose for exhibitor use, which must be coiled up after use, and watering should not



# Floriculture

happen during the hours the fair is open to the public.

18. Youth Exhibits and Adult Exhibits **MUST** be assembled for displayed by the exhibitor during the receiving hours listed above. Adult help is not allowed for youth exhibitors.
19. Entries are open to AMATEURS and PROFESSIONALS. An AMATEUR is defined as an exhibitor who engages in an art or craft as a hobby or for the love of the work, and whose income from sales or teaching does not exceed \$10,000 per year. PROFESSIONAL is an exhibitor who earns income exceeding \$10,000 from teaching or selling items crafted within a specific department.

**1062 DIVISIONS: Youth Primary Floriculture**

**1063 DIVISIONS: Youth Junior Floriculture**

**1064 DIVISIONS: Youth Intermediate Floriculture**

**1065 DIVISIONS: Youth Senior Floriculture**

**1066 DIVISIONS: Adult Amateur Floriculture**

**1067 DIVISIONS: Adult Professional Floriculture**

## CLASSES:

- |  |                                 |
|--|---------------------------------|
| 1. Everyday floral arrangements        | 8. Indoor mini dish garden      |
| 2. Special occasion arrangements       | 9. Potted foliage plants        |
| 3. Miniature arrangements              | 10. Cacti/succulent dish garden |
| 4. Corsage and boutonniere             | 11. Planter bed                 |
| 5. Cut flowers                         | 12. Wheelbarrow garden          |
| 6. Potted flowering plant with foliage | 13. Potted self-propagated      |
| 7. Miscellaneous cut flowers           |                                 |

## Examples of entries.



# Graphic & Two-Dimensional Artistic – Youth Only

<b>Entry Due Date:</b>	June 28 <sup>th</sup> , 2023
<b>Late Entry Due Date:</b>	July 5 <sup>th</sup> , 2023 (\$10 late fee per entry)
<b>Entry Fee:</b>	\$2 per entry
<b>Receiving Day and Time:</b>	July 14 <sup>th</sup> 9AM to 4PM or July 15 <sup>th</sup> 9AM to 2PM

## RULES

1. Please read the rules and guidelines at the beginning of the book. You may also see examples below.
2. Includes all 2-dimensional (substantially flat surface) visual media, except photography.
3. Base surface may be paper, fabric or another suitable base.
4. Entries that are meant to be hung are to be framed or otherwise properly mounted for hanging and must be outfitted with hardware for hanging.
5. Entries will be judged on the following: artistic merit, originality, appropriate level of difficulty, skill, and craftsmanship.
6. **Utilitarian exhibits** must be usable, please specify purpose of the item on the entry form.
7. Utilitarian examples:
  - a. Maps
  - b. Stationery for personal use (business stationery should be entered in the Business Section)
8. **Artistic examples:**
  - a. Original sketches in pencil, charcoal, etc.
  - b. Paintings, watercolors, acrylic, oil, pallet knife, etc.
  - c. Collage and mixed media
9. **Computer graphic** software (a bitmapped or vector drawing program) is considered to be an artistic medium, like oil or charcoal and may be used. However, the entry must be an original creation of the exhibitor. The printed medium must be securely mounted on a mounting board (maximum size 16"x20")
10. **NOTE: Entries that begin by modifying a photograph belong in the Photography Section. Project posters should be entered in Education Displays. Decorative Painting items should be entered in Arts & Crafts.**

**1082 DIVISIONS: Youth Primary Graphic Art**

**1083 DIVISIONS: Youth Junior Graphic Art**

**1084 DIVISIONS: Youth Intermediate Graphic Art**

**1085 DIVISIONS: Youth Senior Graphic Art**

### CLASSES:

- |                |                               |
|----------------|-------------------------------|
| 1. Utilitarian | 3. Computer-generated         |
| 2. Artistic    | 4. Any Other - please specify |

### Examples of entries.



# Honey

<b>Entry Due Date:</b>	June 28 <sup>th</sup> ,2023
<b>Late Entry Due Date:</b>	July 5 <sup>th</sup> ,2023 (\$10 late fee per entry)
<b>Entry Fee:</b>	\$2 per entry
<b>Receiving Day and Time:</b>	July 14 <sup>th</sup> 9AM to 4PM or July 15 <sup>th</sup> 9AM to 2PM

## RULES

1. Please read the rules and guidelines at the beginning of the book. You may also see examples below.
2. Each entry must be listed separately.
3. Each exhibitor must provide their own stand for extracting frames.
4. Exhibitors **MUST** label the jar with their name, **ONLY ON THE BOTTOM** of the jar. If you have multiple entries, please include division and class on the label.
5. USDA Color Grade Chart will be used for judging.
  - a. **Light Honey:** Water White, Extra White, White
  - b. **Medium Honey:** Extra Light Amber, Light Amber, Amber
  - c. **Dark Honey:** Dark Amber through Black
6. **Extracted Honey:** that has been separated from the comb by centrifugal force, gravity, straining, or other means. Extraction to be performed by exhibitor. Entry consists of 2 glass 1lb. Queenline or straight-sided 12 fl. oz. canning jars with plain metal or plastic lids.
7. **Chunk Honey:** Entries shall consist of 1 strip of cut comb, the length of the jar. Shall be placed in a wide mouth straight-sided jar (not a Queenline Jar), then filled with extracted honey.
8. **Comb Honey:** Honey contained in the cells of the comb in which it is produced. Entry consists of one section that may be square, rectangle, or round placed in a clear container. The foundation used must be 100% beeswax with no metal wire support.
9. **Beeswax** entry is a minimum of ½ lb blocks. Geometric shape, smooth surface, smooth surface top and bottom, **NOT DECORATIVE**.
10. **Extracting Frames** are open front and back.
  - a. A full extracting frame is 9 1/8"
  - b. A half-extracting frame is 6 1/4"
  - c. All extracting frame entries must be provided with a frame stand.
11. **Candles:** Entry consists of 2 each, molded, hand rolled, or dipped. Other than a wick, no non-beeswax enhancements are allowed. Molded candles may be from two different molds.
12. **Black Jar:** Honey should be presented in a small (1/2 pint - 1 pint) jar which has been painted black on the outside, so that the color and impurities cannot be seen. The honey is judged on flavor only.
13. Entries are open to **AMATEURS** and **PROFESSIONALS**. An **AMATEUR** is defined as an exhibitor who engages in an art or craft as a hobby or for the love of the work, and whose income from sales or teaching does not exceed \$10,000 per year. **PROFESSIONAL** is an exhibitor who earns income exceeding \$10,000 from teaching or selling items crafted within a specific department.

**1092 DIVISIONS: Youth Primary Honey**

**1093 DIVISIONS: Youth Junior Honey**

**1094 DIVISIONS: Youth Intermediate Honey**

**1095 DIVISIONS: Youth Senior Honey**

**1096 DIVISIONS: Adult Amateur Honey**

**1097 DIVISIONS: Professional Adult Honey**

# Honey

## CLASSES:

### Extracted

1. Light Extracted Honey
2. Medium Extracted Honey
3. Dark Extracted Honey

### Chunk

4. Light Chunk Honey
5. Medium Chunk Honey
6. Dark Chunk Honey

### Comb Honey

7. Cut
8. Built-in Container

### Beeswax- ½ lb. or 1 lb.

9. Light Beeswax
10. Dark Beeswax

### Extracting Frame

11. Half Extracting Frame
12. Full Extracting Frame

### Candles

13. Poured Candles
14. Rolled Candles
15. Hand Dipped Candles

### Black Jar Honey

16. All Black Jar entries

## Examples of entries.





# LEGO - Youth Only

<b>Entry Due Date:</b>	June 28 <sup>th</sup> ,2023
<b>Late Entry Due Date:</b>	July 5 <sup>th</sup> , 2023(\$10 late fee per entry)
<b>Entry Fee:</b>	\$2 per entry
<b>Receiving Day and Time:</b>	July 14 <sup>th</sup> 9AM to 4PM or July 15 <sup>th</sup> 9AM to 2PM

## RULES

1. Please read the rules and guidelines at the beginning of the book. You may also see examples below.
2. All entries must be original designs by the exhibitor no official LEGO builds entered.
3. One entry per exhibitor
4. All LEGO builds shall not exceed overall table space of 1 ½ by 1 ½.
5. **Creative building** entries must be all created by the exhibitor and may not include any sets in the building process.
6. **Realism builds** the main focus item(s) must be made of Legos all other embellishments should not be made of legos.
  - a. Embellishment example: a town could have building of Legos but roads, trees, streetlamps etc. would not be made of Legos.
7. **Living builds** entries to represent something you find in everyday life (tissue boxes that dispense tissues, a computer mouse that works, a plant pot that holds plants, etc.).
8. Items which have been shown at any previous Santa Clara County Fair are not eligible.

**1192 DIVISIONS: Youth Primary LEGO**

**1193 DIVISIONS: Youth Junior LEGO**

**1194 DIVISIONS: Youth Intermediate LEGO**

**1195 DIVISIONS: Youth Senior LEGO**

### CLASSES:

1. Creative Building
2. Realism Build

3. Living Builds

### Examples of entries.





# Menu Planning – Youth Only

<b>Entry Due Date:</b>	June 28 <sup>th</sup> ,2023
<b>Late Entry Due Date:</b>	July 5 <sup>th</sup> ,2023 (\$10 late fee per entry)
<b>Entry Fee:</b>	\$2 per entry
<b>Receiving Day and Time:</b>	July 14 <sup>th</sup> 9AM to 4PM or July 15 <sup>th</sup> 9AM to 2PM

## RULES

1. Please read the rules and guidelines at the beginning of the book. You may also see examples below.
2. Entries will consist of a planned menu with an emphasis on food compatibility; contrast in color; texture, variety; and dietary balance. See USDA My Plate for more information on dietary balance.
3. **Entry requirements for Youth Primary exhibitors (ages 5-8)**
  - a. Plan a menu for one meal.
  - b. Display on a poster board no larger than 11"x14."
4. **Entry requirements for Youth Junior and Intermediate exhibitors (ages 9-14)**
  - a. Plan a menu for 1 day, 3 meals (can include snacks if desired).
  - b. Display on a poster board no larger than 11"x14."
5. **Entry requirements for Youth Senior exhibitors (ages 15-19)**
  - a. Plan a menu for 1 week, 3 meals for 1 day, plus snacks, if desired
  - b. Display either on a 22"x28" poster board or in a booklet form (written on one side only)
6. Posters and booklets may be decorated.

**1102 DIVISIONS: Youth Primary Menu Planning**

**1103 DIVISIONS: Youth Junior Menu Planning**

**1104 DIVISIONS: Youth Intermediate Menu Planning**

**1105 DIVISIONS: Youth Senior Menu Planning**

## CLASSES:

1. All Entries

## Examples of entries.



# Needle & Fiber Arts

<b>Entry Due Date:</b>	June 28 <sup>th</sup> ,2023
<b>Late Entry Due Date:</b>	July 5 <sup>th</sup> ,2023 (\$10 late fee per entry)
<b>Entry Fee:</b>	\$2 per entry
<b>Receiving Day and Time:</b>	July 14 <sup>th</sup> 9AM to 4PM or July 15 <sup>th</sup> 9AM to 2PM

## RULES

1. Please read the rules and guidelines at the beginning of the book. You may also see examples below.
2. Please include a 3"x5" card describing if the entry was created from a kit/pattern and the various techniques used in creating the entry, particularly for the "any other class" or if multiple techniques were used or if the exhibitor designed the item.
3. Entries may consist of more than one item to be judged as a unit.
4. Entries in this section to be judged primarily on technical skill. Entries such as jewelry and toys can be entered here or the Arts & Crafts section. If exhibitor wants the entry to be judged primarily on artistic merit, creativity, and craftsmanship it should be entered the Arts & Crafts section.
5. Entries are open to AMATEURS and PROFESSIONALS. An AMATEUR is defined as an exhibitor who engages in an art or craft as a hobby or for the love of the work, and whose income from sales or teaching does not exceed \$10,000 per year. PROFESSIONAL is defined as an exhibitor who earns income exceeding \$10,000 from teaching or selling items crafted within a specific department.
6. **EXAMPLES:**
  - a. **Crochet-** Crochet animals, crochet food and beverages, bags, hats, etc.
  - b. **Knitting-** Blankets, animals, sweaters, etc.
  - c. **Felting, Needle Felting, Wet Felting** - Felt animals, bags, etc.
  - d. **Macrame, Knotting, Braiding, Kumihimo** - Bracelets, hanging planters, wall art etc.
  - e. **Embroidery, Cross stitch, Crewel, Needlepoint** - Christmas stockings, wall art, pillowcases, etc.
  - f. **Weaving, Hooking, Basketry** - Rugs, baskets, wall art, etc.
  - g. **Lace-** Bobbin lace, Cutwork lace, Allover lace, Alencon lace, etc.

**1112 DIVISIONS: Youth Primary Needle & Fiber Arts**

**1113 DIVISIONS: Youth Junior Needle & Fiber Arts**

**1114 DIVISIONS: Youth Intermediate Needle & Fiber Arts**

**1115 DIVISIONS: Youth Senior Needle & Fiber Arts**

**1116 DIVISIONS: Adult Amateur Needle & Fiber Arts**

**1117 DIVISIONS: Professional Needle & Fiber Arts**

## CLASSES:

- |                        |                               |
|------------------------|-------------------------------|
| 1. Crochet             | 5. Embroidery                 |
| 2. Knitting            | 6. Weaving                    |
| 3. Felting – all types | 7. Lace                       |
| 4. Macrame             | 8. Any other - please specify |

# Needle & Fiber Arts

Examples of entries.



# Photography

<b>Entry Due Date:</b>	June 28 <sup>th</sup> ,2023
<b>Late Entry Due Date:</b>	July 5 <sup>th</sup> ,2023 (\$10 late fee per entry)
<b>Entry Fee:</b>	\$2 per entry
<b>Receiving Day and Time:</b>	July 14 <sup>th</sup> 9AM to 4PM or July 15 <sup>th</sup> 9AM to 2PM

## RULES

1. Please read the rules and guidelines at the beginning of the book. You may also see examples below.
2. **An exhibit consists of one mounted photograph.**
3. Limits: youth exhibitors are limited to three (3) entries per class. Adult exhibitors are limited to one (1) entry per class.
4. Due to space limitations some entries may not be displayed.
5. **NO FRAMES.** Photos **MUST** be mounted on cardstock/mat board. Professional matting is not required.
6. All photos must be 8"x10" and matted on an 11"x14" mat. **NEW!**
7. Prints must have been taken by the exhibitor but may be processed at either home or commercial lab.
8. Entries with writing on the front of the exhibit will not be accepted.
9. For the **manipulation** classes:
  - a. Entries **MUST** include a "before" picture with the entry. Entries without a "before" picture will be disqualified.
  - b. Manipulation means the basic application of filters to a photograph or multiple captures combined into a new image.
10. Entries are limited to AMATEURS. An AMATEUR is defined as an exhibitor who engages in an art or craft as a hobby or for the love of the work, and whose income from sales or teaching does not exceed \$10,000 per year.

**1122 DIVISIONS: Youth Primary Photography**

**1123 DIVISIONS: Youth Junior Photography**

**1124 DIVISIONS: Youth Intermediate Photography**

**1125 DIVISIONS: Youth Senior Photography**

**1126 DIVISIONS: Adult Amateur Photography**

## CLASSES

- |  |   |
|--|---|
| <ol style="list-style-type: none"> <li>1. Travel</li> <li>2. Scenic/Landscape</li> <li>3. People</li> <li>4. Nature, Floral, and Botany</li> <li>5. Domestic pets and animals</li> </ol> | <ol style="list-style-type: none"> <li>6. Wild animals (in a natural environment)</li> <li>7. Photojournalism (storytelling photography)</li> <li>8. Black and White/ Monochromatic</li> <li>9. Manipulation</li> </ol> |
|--|---|

# Photography

Examples of entries.





## Preserved Foods

<b>Entry Due Date:</b>	June 28 <sup>th</sup> , 2023
<b>Late Entry Due Date:</b>	July 5 <sup>th</sup> , 2023 (\$10 late fee per entry)
<b>Entry Fee:</b>	\$2 per entry
<b>Receiving Day and Time:</b>	July 14 <sup>th</sup> 9AM to 4PM or July 15 <sup>th</sup> 9AM to 2PM

**A canned exhibit consists of 2 jars of each item entered. Jars do not have to be identical in shape and size. (One 4 oz. taste jar is permitted.)**

### RULES

1. Please read the rules and guidelines at the beginning of the book. You may also see examples below.
2. **Preserved Foods** entries are to be prepared at home, without the use of commercial equipment or commercial kitchen facilities.
3. **“Any Other”** class entries may only be entered if there is no class listed for that category.
4. Bring TWO (2) containers for judging. One will be used for judging, the other for display.
5. All jars must be standard clear canning jars with a two (2) part metal lid and ring band closure. No colored jars. No paraffin wax or inversion method.
6. **Vinegars & Liqueurs** should be entered in glass bottles or decanters (minimum 8 oz.)
7. **Dipping Oils** should be entered in clear glass containers with lids (minimum 2 oz.).
8. All processed jars must be properly sealed. Unsealed jars and jars that cannot be opened by the judges will be disqualified and may not be displayed.
9. All entries must be labeled. Labels must be no larger than 2” x 2” and placed on the side of the container. The name of the exhibitor must NOT be on this label, no other decoration can be on the containers. Labels must include:
  - a. product name
  - b. date prepared
  - c. preservation method, (WB for Water Bath, PC for Pressure Canner)
  - d. process time
  - e. any unusual ingredients
10. Steam-canned or open-kettle items will not be accepted.
11. The following headspaces must be utilized for each product:
  - a. 1/4” for jams, jellies, preserves, conserves, butters, marmalades, and curds
  - b. 1/2” for fruits, tomatoes, sauerkraut, pickles, relishes, chutneys, sauces, and salsa
  - c. 1” to 1 1/4” for pressured canned products
12. All low or non-acid foods; (vegetables, meats, poultry, and fish) must be canned under pressure. All high acid foods: (jams, jellies soft spreads, pickles, relishes, chutneys, fruit and tomatoes) must be processed in a boiling water bath. Low-acid fruit, such as figs, must be made more acidic by adding lemon juice as directed in the USDA Complete Guide to Home Canning.
13. All entries must have been completed since the receiving date of the 2022 Santa Clara County Fair
14. Entries are open to AMATEURS. An AMATEUR is defined as an exhibitor who engages in an art or craft as a hobby or for the love of the work, and whose income from sales or teaching does not exceed \$10,000 per year.



# Preserved Foods

## DEFINITIONS

1. **Butters:** Fruit purees that are combined with sugar and cooked down slowly to a thick, spreading consistency.
2. **Conserves:** a combination of at least 2 fruits with a consistency like jam. It also must contain nuts, coconut, or raisins.
3. **Jams:** combination of crushed or chopped fruit and sugar that are cooked to a smooth consistency, thick enough to spread well.
4. **Jelly:** soft gelatinous clear foods made from cooked fruit syrup. No pulp, seed, or piece of product with the exception of pepper jelly which can have pieces of paper suspended in it.
5. **Marmalades:** soft jellies, usually containing thin suspended pieces of citrus peel or fruit.
6. **Preserves:** whole or cut fruit or uniform pieces cooked slowly so that the pieces retain their shape and do not become pulp.

**1202 DIVISIONS: Youth Primary Preserved Foods**

**1203 DIVISIONS: Youth Junior Preserved Foods**

**1204 DIVISIONS: Youth Intermediate Preserved Foods**

**1205 DIVISIONS: Youth Senior Preserved Foods**

**1206 DIVISIONS: Adult Amateur Preserved Foods**

## CLASSES:

- |   |   |
|---|---|
| <ol style="list-style-type: none"> <li>1. Canned Fruits</li> <li>2. Canned vegetables</li> <li>3. Pickled Items</li> <li>4. Sauces/Condiments/Salsa</li> <li>5. Jams</li> <li>6. Jellies</li> <li>7. Preserves</li> <li>8. Butters, Conserves and Marmalades</li> </ol> | <ol style="list-style-type: none"> <li>9. <b>Dried Fruit or Vegetables</b> (4 pieces in Ziploc type bag)</li> <li>10. <b>Fruit Leather</b> (1 roll approximately 6"x6" in a Ziploc type bag)</li> <li>11. <b>Dried Herbs</b> (4 pieces or 3 tbsp ground in Ziploc type bag)</li> <li>12. <b>Jerky</b> (4 Pieces in Ziploc type bag)</li> <li>13. <b>Any Other</b> - please specify</li> </ol> |
|---|---|

## Examples of entries.



# Recycle! Repurpose!

<b>Entry Due Date:</b>	June 28 <sup>th</sup> ,2023
<b>Late Entry Due Date:</b>	July 5 <sup>th</sup> ,2023 (\$10 late fee per entry)
<b>Entry Fee:</b>	\$2 per entry
<b>Receiving Day and Time:</b>	July 14 <sup>th</sup> 9AM to 4PM or July 15 <sup>th</sup> 9AM to 2PM

## RULES

1. Please read the rules and guidelines at the beginning of the book. You may also see examples below.
2. **Recycle!**
  - a. Make a craft using common recyclable items such as milk cartons, potato chip cans, tin cans, or cardboard tubes.
3. **Repurpose!**
  - a. Start with one item and transform it into something new!
  - b. Entry **MUST** Include a photo of the original item along with your finished product.
  - c. Finished entry must be no larger than 24"x36".
4. Entries in this section to be judged primarily on artistic merit, creativity, and craftsmanship. If exhibitor wants entries to be judged on technical merit it should be entered other Sections. For example, wearable items if you want to be judged on your stitching or anything relating to sewing, see Sewing & Quilting section.
5. Entries are open to AMATEURS. An AMATEUR is defined as an exhibitor who engages in an art or craft as a hobby or for the love of the work, and whose income from sales or teaching does not exceed \$10,000 per year.
6. **DEFINITION/EXAMPLES:**
  - a. **Recycle! – Are items that would otherwise be discarded made into something** - Feed bag to tote bag or dress, collar made from baling string.
    - i. **Recycled Textiles:** - Dress, Suits, Any Clothing, Etc.
    - ii. **Recycled Sculptures:** Plastic Sea creatures, Plastic animals, Recyclable Buildings, Etc.
    - iii. **Recycled Accessories:** Recyclable wallets, Recyclable Threads, Recyclable Hats, Etc.
  - b. **Repurpose! – Everyday item made into something else** – Shirt into tote bag.

**1072 DIVISIONS: Youth Primary Recycle! Repurpose!**

**1073 DIVISIONS: Youth Junior Recycle! Repurpose!**

**1074 DIVISIONS: Youth Intermediate Recycle! Repurpose!**

**1075 DIVISIONS: Youth Senior Recycle! Repurpose!**

**1076 DIVISIONS: Adult Amateur Recycle! Repurpose!**

## CLASSES:

1. Recycle!
2. Repurpose!

# Record and Project Books – Youth Only

<b>Entry Due Date:</b>	June 28 <sup>th</sup> , 2023
<b>Late Entry Due Date:</b>	July 5 <sup>th</sup> , 2023 (\$10 late fee per entry)
<b>Entry Fee:</b>	\$2 per entry
<b>Receiving Day and Time:</b>	July 14 <sup>th</sup> 9AM to 4PM or July 15 <sup>th</sup> 9AM to 2PM

## RULES

1. Please read the rules and guidelines at the beginning of the book. You may also see examples below.
2. Entries should use the forms and appropriate records of the organizations in which the work was done. Examples include 4-H, FFA, Scouting Organizations, etc. If the work was done independently, please include a brief summary.
3. **Record Books** are used to record an individual's activities and learnings throughout a program year.
  - a. Record books must meet the minimum criteria for judging the organization for which they are developed.
  - b. Optional items: Multiple project form reports (this year's), project forms for other years, photos, other appropriate paper-based items, and examples of work completed.
4. **Project Notebooks** are records that document items created, or skills and facts learned about a specific subject. The project may have involved multiple people, but the entry for this category should focus on the efforts of an individual.
  - a. At minimum include 1 page of project-related notes/data.
  - b. Other information to include project plans, leadership plans, project meeting notes, costs and expenses, income, pictures, drawings, observations, etc. which may apply.
  - c. Samples of work and/or photos are encouraged. For example, cloth swatches, threads, dried plants, drawings, clippings, etc.
  - d. Include names of other project members, if applicable.
  - e. Include names of companies or organizations related to project etc.
  - f. If this is a multi-year project, please include previous work to show progress.
  - g. Maximum size shall not exceed 24"x24"x26"; maximum of 5 lbs. of entry.
5. **Officer's Books/Documentation** are related to holding an elected or appointed leadership position in an organization, school, or club. Examples include, but are not limited to secretary, treasurer, reporter (submitted and published), committee chair, etc.
  - a. Entries should include: paper documentation (hard copy), computer generated information (if applicable, along with what software was used), books, balance sheets, letters, scrapbooks and related office responsibilities.

**1212 DIVISIONS: Youth Primary Record and Project Books**

**1213 DIVISIONS: Youth Junior Record and Project Books**

**1214 DIVISIONS: Youth Intermediate Record and Project Books**

**1215 DIVISIONS: Youth Senior Record and Project Books**

### CLASSES:

- |   |  |
|---|--|
| <ol style="list-style-type: none"> <li>1. Record Book</li> <li>2. Project Notebook</li> </ol> | <ol style="list-style-type: none"> <li>3. Officer's Book/Documentation</li> <li>4. Any Other - please specify</li> </ol> |
|---|--|

# Sewing & Quilting

<b>Entry Due Date:</b>	June 28 <sup>th</sup> , 2023
<b>Late Entry Due Date:</b>	July 5 <sup>th</sup> , 2023 (\$10 late fee per entry)
<b>Entry Fee:</b>	\$2 per entry
<b>Receiving Day and Time:</b>	July 14 <sup>th</sup> 9AM to 4PM or July 15 <sup>th</sup> 9AM to 2PM

## RULES

1. Please read the rules and guidelines at the beginning of the book. You may also see examples below.
2. **Quilt Definition:** A quilt consists of three layers; a fabric top, a fabric back, and a soft material between. These layers are held together either by patterned hand stitches or patterned machine stitching that pierces all three layers.
3. All work must be done by the exhibitor only, except for machine quilting in the “professionally quilted for exhibitor” class.
4. Quilts must be in good condition, clean, and free from pet hair, etc., or will not be judged.
5. All quilted blankets or art quilts (intended to be hung) must have a 4-inch sleeve basted (sewn) across the entire top edge of the quilt for display purposes.
6. Classes 1, 2 & 3 are for large art quilts (made primarily to be hung as art) or quilts to be used as blankets. All other quilted items to be entered in classes 4 or 5.
7. Exhibits must be clean and pressed and must not show excessive wear.
8. Entries are open to AMATEURS. An AMATEUR is defined as an exhibitor who engages in an art or craft as a hobby or for the love of the work, and whose income from sales or teaching does not exceed \$10,000 per year. PROFESSIONAL is an exhibitor who earns income exceeding \$10,000 from teaching or selling items crafted within a specific department.
9. **Examples:**
  - A. **Hand Quilted:** Themed Quilts, Family Quilts, Tapestry Quilts, Etc.
  - B. **Machine Quilted by the Exhibitor:** Themed Quilts, Family Quilts, Tapestry Quilts, Etc.
  - C. **Professionally Quilted by the Exhibitor:** Fantasy themed, Historical, Etc.
  - D. **Quilted Wearable:** Jackets, Pants, Vest, Etc.
  - E. **Quilted Non-Wearable:** Purse, Wallets, Bag, Pillow, Etc.
  - F. **Household:** Placemats, napkins, Holiday stocking, Etc.
  - G. **Clothing:** Adult, Child, Doll clothing, Etc.

**1132 DIVISIONS: Youth Primary Sewing & Quilting**

**1133 DIVISIONS: Youth Junior Sewing & Quilting**

**1134 DIVISIONS: Youth Intermediate Sewing & Quilting**

**1135 DIVISIONS: Youth Senior Sewing & Quilting**

**1136 DIVISIONS: Adult Amateur Sewing & Quilting**

## CLASSES

- |   |                               |
|---|-------------------------------|
| 1. Hand quilted.                        | 5. Quilted non-wearable       |
| 2. Machine quilted by the exhibitor.    | 6. Household                  |
| 3. Professionally quilted for exhibitor | 7. Clothing and accessories   |
| 4. Quilted wearable                     | 8. Any Other - please specify |

# Sewing & Quilting

Examples of entries.



# Table Settings

<b>Entry Due Date:</b>	June 28 <sup>th</sup> ,2023
<b>Late Entry Due Date:</b>	July 5 <sup>th</sup> ,2023 (\$10 late fee per entry)
<b>Entry Fee:</b>	\$2 per entry
<b>Receiving Day and Time:</b>	July 14 <sup>th</sup> 9AM to 4PM or July 15 <sup>th</sup> 9AM to 2PM

## RULES

1. Please read the rules and guidelines at the beginning of the book. You may also see examples below.
2. Entries are open to AMATEURS and PROFESSIONALS. An AMATEUR is defined as an exhibitor who engages in an art or craft as a hobby or for the love of the work, and whose income from sales or teaching does not exceed \$10,000 per year. PROFESSIONAL is defined as an exhibitor who earns income exceeding \$10,000 from teaching or selling items crafted within a specific department.
3. The exhibitor must provide all materials for the table setting including tablecloth, plates, setting, cups, etc.
4. A printed menu must be on the table and all glassware, utensils, dishes required for the meal must be included in the table setting.
5. Exhibits must be assembled by the exhibitor during the receiving hours listed above. Adult help is not allowed for youth entries.
6. For **4 place setting exhibits**, the Exhibits Office will provide a table 5FT Diameter circle table. Limited to 1 entry per exhibitor. **NEW!**
7. For **1 place setting exhibits**, the Exhibits Office will provide 1/3 of a table, 30" wide x 72" long.
8. Please notify the Fair Exhibits Office if you are unable to provide your exhibit.
9. **Single (1) Place Setting** classes are for YOUTH ONLY.

**1142 DIVISIONS: Youth Primary 4 Place Setting**

**1143 DIVISIONS: Youth Junior 4 Place Setting**

**1144 DIVISIONS: Youth Intermediate 4 Place Setting**

**1145 DIVISIONS: Youth Senior 4 Place Setting**

**1146 DIVISIONS: Adult Amateur 4 Place Setting**

**1147 DIVISIONS: Professional Adult 4 Place Setting**

### CLASSES:

- |                  |                             |
|------------------|-----------------------------|
| 1. Holiday Party | 4. Formal Dinner            |
| 2. Child's Party | 5. Informal Lunch or Dinner |
| 3. Picnic        | 6. Ethnic Meal              |

**1152 DIVISIONS: Youth Primary 1 Place Setting**

**1153 DIVISIONS: Youth Junior 1 Place Setting**

**1154 DIVISIONS: Youth Intermediate 1 Place Setting**

**1155 DIVISIONS: Youth Senior 1 Place Setting**

### CLASSES:

- |                   |                             |
|-------------------|-----------------------------|
| 1. Birthday Party | 3. Formal Dinner            |
| 2. Breakfast      | 4. Informal Lunch or Dinner |



# Table Settings

## Examples of entries.



## Technology & Computer Science – Youth Only

<b>Entry Due Date:</b>	June 28 <sup>th</sup> ,2023
<b>Late Entry Due Date:</b>	July 5 <sup>th</sup> ,2023 (\$10 late fee per entry)
<b>Entry Fee:</b>	\$2 per entry
<b>Receiving Day and Time:</b>	July 14 <sup>th</sup> 9AM to 4PM or July 15 <sup>th</sup> 9AM to 2PM

### RULES

1. Please read the rules and guidelines at the beginning of the book. You may also see examples below.
2. Follow all copyright laws in use of text, music, and images.
3. Please specify if the exhibit moves in any way, particularly if it is intended to move while unattended. Also specify if exhibit will be plugged in during The Fair; note that only regular household-type plugs can be accommodated. Exhibits Office reserves the right to unplug the entry at any time for any reason.
4. Entry must not contain violence or inappropriate content; the Fair and/or judges reserve the right to reject any entries that are deemed inappropriate.
5. Entries on woodworking, metalwork, and 3D printing classes are to be judged primarily on technical skill. If the exhibitor wants the entry to be judged primarily on artistic merit, creativity, and craftsmanship it should be entered the Arts & Crafts section.
6. Each exhibit must include an information card (minimum 3"x5" card) that explains the items. Example information to include what you did, how technology was used, why you chose to make this item, how it is used, etc. Please specify if item was made from a kit, follows a published design or if the exhibitor designed the item.
7. **Programming entries** must have been written by the exhibitor. The exhibit is to include program source code listing, documentation, screen printouts, result printouts, and a flash drive with the program loaded on it, etc. but exhibitors are not expected to supply a computer. Type of computer and operating system should be identified on the entry form.
8. **Website entries** comprise of one or more web pages including text and graphics. If more than one page, the pages should be appropriately linked. The entry is to include page printouts, HTML/other source code, flash drive containing a viewable copy of the site, an identification of tools used to develop the pages and a description of the process. All non-original work (pictures clip art, ideas, text, etc.) must be cited on the page in which they appear. Website class to upload link to the publicly accessible website, in addition to providing a flash drive as noted above.
9. **Photo Editing** entries are to demonstrate mastery of software used. They will be judged on technical rather than artistic considerations. Photo editing entries require a side-by-side printout of unmodified and modified photo, as well as an explanation identifying the tools and process used to create the final image. Note that the same edited images may be entered in the Photography to be judged on artistic merit as well. All printouts must be securely mounted on a mounting board (maximum size 16"x20").
10. **Slide show or video** includes presentations using PowerPoint, Keynote or similar tools and video edited on a computer. Include an explanation identifying the tools used to create the item and process used. Entry to include a playable copy of the presentation on a flash drive for judging, but exhibitors are not expected to supply a computer.
11. **Digital Animation** includes stop-motion animation with clay or other materials; video games; stick figure animations; and 2D or 3D animations. Entries must use Pivot Animator, Scratch, Kodu, or stop-motion animation software. All entries must be saved in format native to the program which it is created. Entry is to be submitted on a flash drive. If entry is a video game, entry must include directions on how to play it and a screenshot printed on 8.5"x11" paper. If entry is animation, entry must include title and a screenshot printed on 8.5"x11" paper.

# Technology & Computer Science – Youth Only

**1162 DIVISIONS: Youth Primary Technology & Computer Science**

**1163 DIVISIONS: Youth Junior Technology & Computer Science**

**1164 DIVISIONS: Youth Intermediate Technology & Computer Science**

**1165 DIVISIONS: Youth Senior Technology & Computer Science**

## CLASSES:

- |                              |                       |
|------------------------------|-----------------------|
| 1. Programming               | 6. Robotics           |
| 2. Website                   | 7. Metal Work         |
| 3. Photo editing             | 8. Woodworking        |
| 4. Slideshow or Video        | 9. 3-D Printing       |
| 5. Electricity & Electronics | 10. Digital Animation |

## Examples of entries.



# Veggie-Art

<b>Entry Due Date:</b>	June 28 <sup>th</sup> ,2023
<b>Late Entry Due Date:</b>	July 5 <sup>th</sup> ,2023 (\$10 late fee per entry)
<b>Entry Fee:</b>	\$2 per entry
<b>Receiving Day and Time:</b>	July 26 <sup>th</sup> - 9AM to 12PM

## RULES

1. Please read the rules and guidelines at the beginning of the book. You may also see examples below.
2. All Veggie-Art exhibits must be made from 100% fresh vegetables/fruit – no artificial vegetables/fruit will be accepted.
3. Exhibits should be no larger than 24" x24" in size.
4. All exhibits should be able to stand on their own on a table or they should be mounted to hang on a wall.
5. Exhibits may be pieced and/or held together with non-vegetable/fruit attachments, *i.e.*, toothpicks, bamboo skewers, string, yarn etc.
6. Entries are open to AMATEURS and PROFESSIONALS. An AMATEUR is defined as an exhibitor who engages in an art or craft as a hobby or for the love of the work, and whose income from sales or teaching does not exceed \$10,000 per year. PROFESSIONAL is defined as an exhibitor who earns income exceeding \$10,000 from teaching or selling items crafted within a specific department.
7. **EXAMPLES:**
  - a. **Animals:** Sculptures, Animals Portrayed as Fruit, or Vegetables, Etc.
  - b. **Faces:** Facial Expressions, Iconic Faces, Etc.

**1172 DIVISIONS: Youth Primary Veggie-Art**

**1173 DIVISIONS: Youth Junior Veggie-Art**

**1174 DIVISIONS: Youth Intermediate Veggie-Art**

**1175 DIVISIONS: Youth Senior Veggie-Art**

**1176 DIVISIONS: Adult Amateur Veggie-Art**

**1177 DIVISIONS: Professional Adult Veggie-Art**

## CLASSES:

1. Animals
2. Faces
3. Any Other - please specify

## Examples of entries.



# Organization/Group Exhibits

<b>Entry Due Date:</b>	June 28 <sup>th</sup> ,2023
<b>Late Entry Due Date:</b>	July 5 <sup>th</sup> ,2023
<b>Entry Fee:</b>	No entry fees
<b>Receiving Day and Time:</b>	July 26 <sup>th</sup> - 9AM to 12PM or by special arrangements

## For the Following:

- Teachers
- Clubs - Boy Scouts. Girl Scouts, Etc,
- Summer Schools/Camps
- Retirement Centers
- Religious Groups
- Etc.

## General Guidelines

1. Entries for groups must be entered in the Home Arts Department under group entries.
2. Entries will not be judged and only displayed during the run of the Fair.
3. Groups are encouraged to supply a banner or sign with the group's name, a logo, and a brief description of the group to be displayed alongside their exhibit.
4. The full name of the youth or students should not be visible on the artwork.
5. All entries should be dropped off on the above noted drop off times. Because the fair is during the summer if groups would like to make special drop off arrangements to drop off art prior to the typical drop off date, once you have entered online, contact the Fair office for special arrangements.
6. Pick-up will be no earlier than August 7<sup>th</sup>.
7. The fair will work with those who make group entries for discounted tickets.
8. If you have any questions about your entry, contact the Fair Office at 408-477-7125 or [SDuarte@thefair.org](mailto:SDuarte@thefair.org), or [SDearman@thefair.org](mailto:SDearman@thefair.org).